



# GMT MONTHLY MEMBERSHIP PROGRESS REPORT

Results as of: 6/30/2017

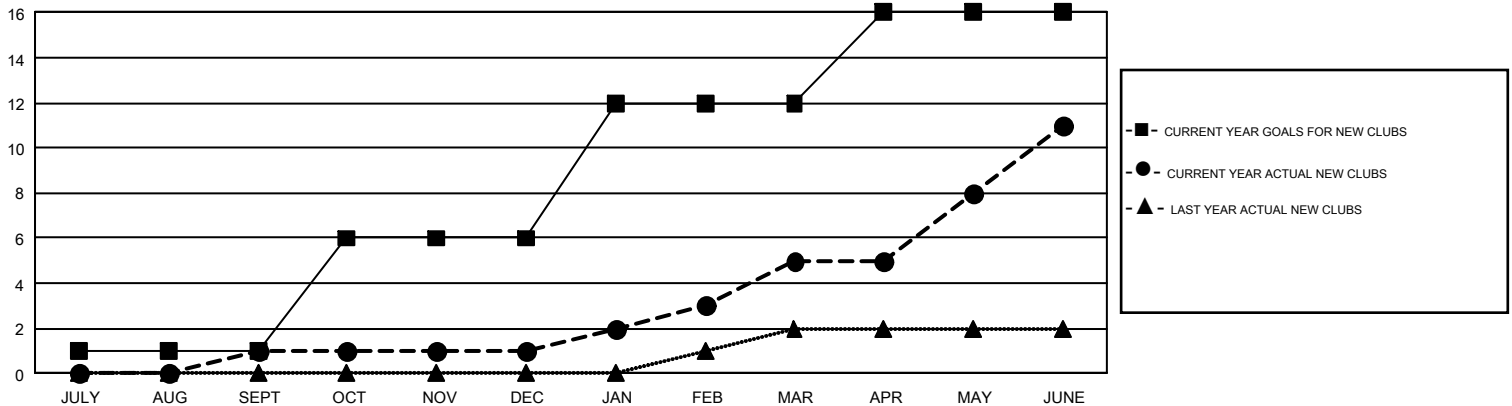
## GMT Constitutional Area 2, Group B

GMT: OPEN

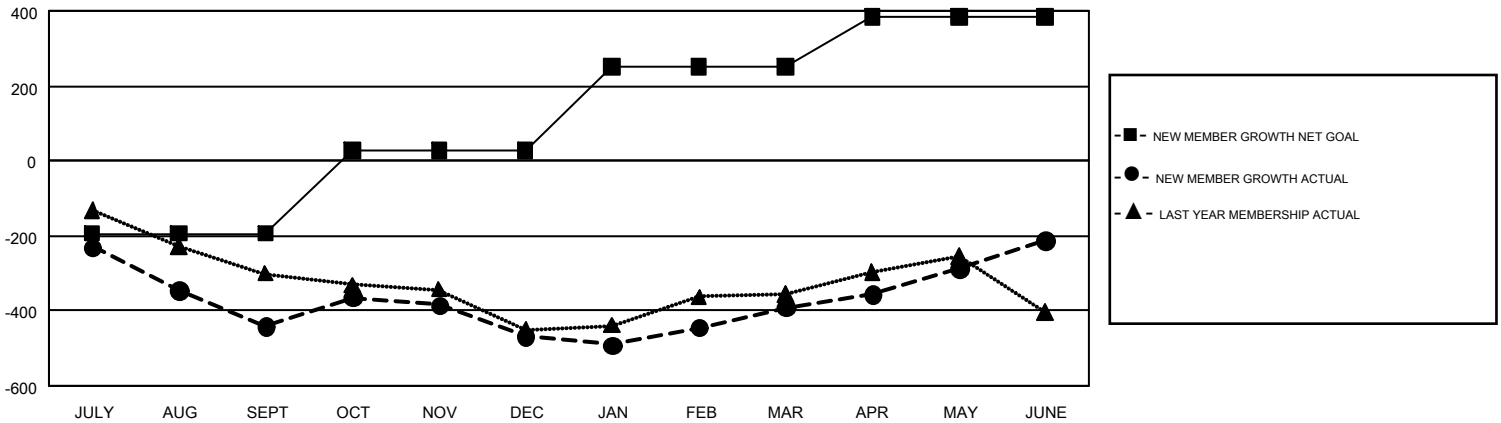
REPORT DOES NOT INCLUDE CLUBS IN UNDISTRICTED AREAS.

Clubs				Members			
RESULTS FOR 2016-2017				RESULTS FOR 2016-2017			
QUARTER	NEW CLUB GOAL	NEW CLUBS	DROPPED CLUBS	QUARTER	NEW MEMBER GROWTH NET GOAL (not reinstated or transfers)	NEW MEMBER GROWTH ACTUAL (not reinstated or transfers)	DROPPED MEMBERS ACTUAL (including transfers)
JULY/AUG/SEPT	1	1	4	JULY/AUG/SEPT	-195	252	693
OCT/NOV/DEC	5	0	3	OCT/NOV/DEC	223	532	558
JAN/FEB/MAR	6	4	2	JAN/FEB/MAR	222	550	474
APR/MAY/JUNE	4	6	4	APR/MAY/JUNE	135	849	671

GOALS AND ACTUAL NEW CLUBS CUMULATIVE



GOALS AND ACTUAL MEMBERS CUMULATIVE



DROPPED CLUBS: 13	546 CLUBS OF 781 ADDED 1 OR MORE NEW MEMBERS	<b>GENDER DISTRIBUTION</b> MALE 13,353 (70.83%) FEMALE 5,499 (29.17%)
<b>DROPPED MEMBERS</b> DECEASED 276 CLUB CANCELLED 61 OTHER 2,059 <b>TOTAL 2,396</b>	<a href="#">CLICK HERE FOR CUMULATIVE MEMBERSHIP DATA</a>	TOTAL FAMILY UNIT MEMBERS 3,475 FAMILY MEMBERS PAYING HALF DUES 1,779